



BYWATER HERRING
SALES & LETTINGS

A TRADITION OF TRUST



Spinney Lane Irthlingborough
£1,000

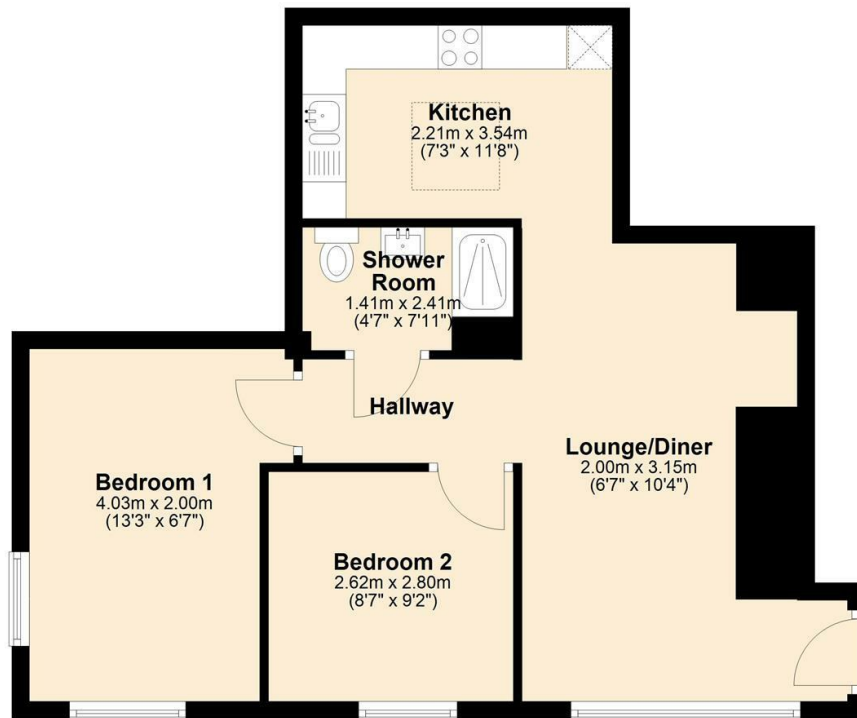
- Be the first to live here with everything brand new and ready to go
- Light-filled open-plan living and kitchen space that's easy to furnish
- Prime ground floor position with no stairs and easy access
- Rushden Lakes and Stanwick Lakes just a short drive for weekends out
- One of only four new flats in the building - so be quick!
- Two bedrooms offering space for work-from-home, guests or growing into
- High-spec finish with clean modern design and smart layout
- Just off the High Street with shops, cafés and takeaways around the corner
- Ideal for couples starting out or downsizing without compromise

Be The First To Make Memories Here - So Every "First" Belongs To You. Cooking your first romantic dinner-for-two. Your first lie-in. Your first silly argument over the thermostat. This brand-new flat is a blank page - and so handy for the High Street.

THE PROPERTY

Ground Floor

Approx. 53.8 sq. metres (578.9 sq. feet)



Total area: approx. 53.8 sq. metres (578.9 sq. feet)



42 High Street, Irthlingborough, Northamptonshire, NN9 5TN

Tel: 01933 427742 Email: ask@bywaterherring.co.uk <https://www.bywaterherring.co.uk>